





-  Lot Boundary
-  Existing Driveway
-  Mexican Cream Patio
<https://www.989rock.com>
-  Gravel or River Stone
<https://www.989rock.com>
-  Grass
-  Soil or Mulch

Landscaping	Quantity
Main Entrance Path (Gravel or Stone)	40.68 sq ft
Mexican Cream Patio	132.61 sq ft
Planting Bed (Mulch or Soil)	462.84 sq ft
Planting Bed (Gravel or Stone)	83.95 sq ft

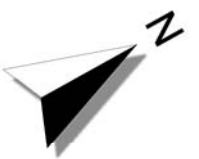
All measurements are for rough estimation purposes only. Due to varying grades, ground conditions, construction methods and other factors, all measurements should be calculated manually by a qualified professional.

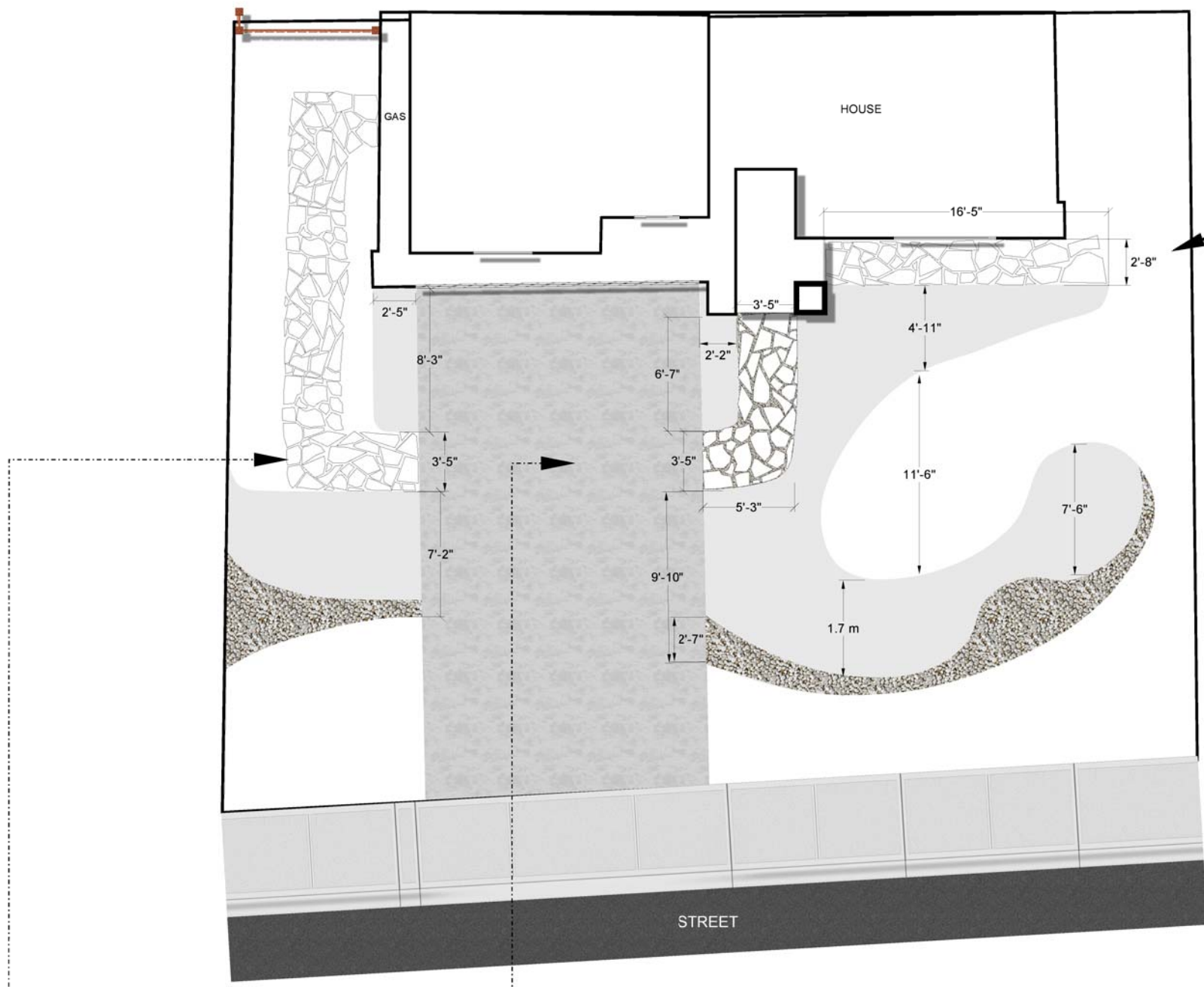


LANDSCAPING DESIGN
Landscaping Plan

Designed by: Ophélie Huyet

Date: 2022-04-19
Revised: 2022-04-22
Scale: 1/8" = 1'-0"



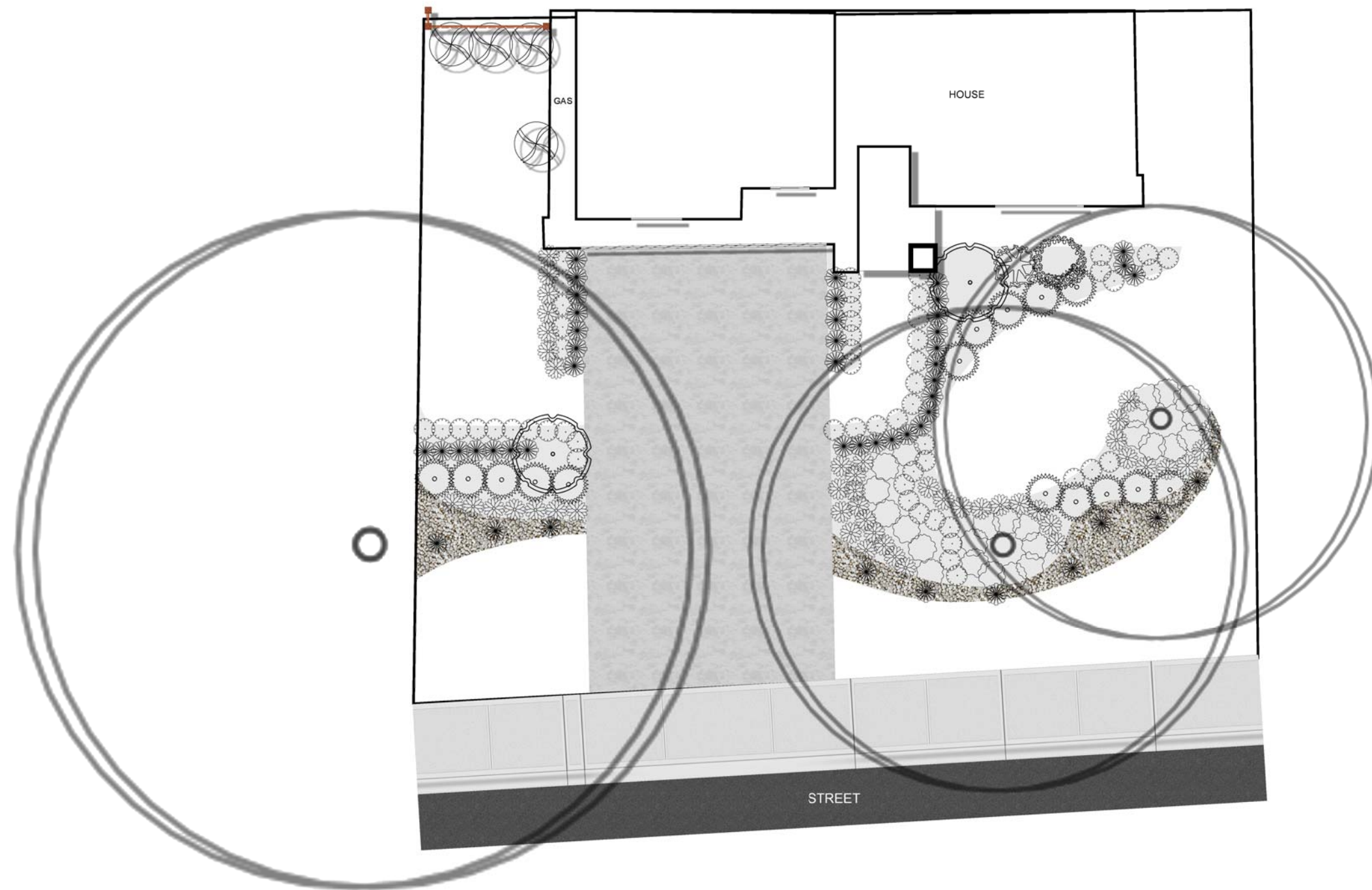


LANDSCAPING DESIGN
Measurements Plan

Designed by: Ophélie Huyet

Date: 2022-04-19
Revised: 2022-04-22
Scale: 1/8" = 1'-0"





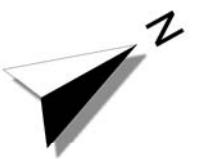
Plant Legend				
Symbol	Key	Botanical	Common	Qty
	Existing Trees			3
	Evergreen	<i>Asplenium nidus</i>	Bird's Nest Fern	15
	Evergreen	<i>Farfugium japonicum</i>	Leopard Plant	25
	Ornamental Grasses	<i>Muhlenbergia capillaris</i>	Gulf Muhly	4
	Palms	<i>Sabal minor</i>	Dwarf Palmetto	2
	Perennial	<i>Bletilla striata</i>	Chinese Ground Orchid	44
	Perennial	<i>Liriope muscari</i>	Liriope	46
	Perennial	<i>Aquilegia chrysantha Hinkleyana</i>	Texas Gold Columbine	54
	Shrub	<i>Aucuba japonica</i>	Aucuba japonica	1
	Shrub	<i>Fatsia japonica</i>	Japanese Aralia	1

The proposed plants are for information purposes only. The nurseries will be able to suggest alternative plants if they do not have the proposed plants in stock.



LANDSCAPING DESIGN
Planting Plan

Date: 2022-04-19
Revised: 2022-04-22
Scale: 1/8" = 1'-0"





Water Low



Gulf Muhly

Muhlenbergia capillaris

Waterwise

Native

Tags:      

Regions: (A) (B) (C) (D) (E) (F) (G) (H) [Show Region Map](#)

Showy, upright ornamental grass bearing wispy purple flower plumes in late summer. Striking planted in masses. Heat and drought tolerant; excellent for dry, low maintenance areas. Native to Texas.

Section: Ornamental Grasses

Type: Deciduous

Uses: Borders, perennial gardens

Average size in the landscape: ALS-4'T x 3'W

Average height: 4'

Size In Tables: NA

Color: Purple

Bloom Time: Summer

Exposure: Full Sun to Partial Shade

Water Usage: Low

Hardiness Zone: all areas

Cold Hardiness: no

Water medium



Liriope

Liriope muscari

Tough Ground cover

Not Native

Tags:      

Regions: (A) (B) (C) (D) (E) (F) (G) (H) [Show Region Map](#)

Excellent ground cover for low flowerbed border edging or mass planting. Grass-like foliage grows in clumps. Many different green or variegated leafed forms available. Flowers generally lilac, some are white. 'Variegata' and 'Majestic' are improved varieties.

Section: GroundCover

Type: Evergreen

Uses: Borders, Ground cover

Average size in the landscape: ALS-12-18*T x 15-18*W

Average height: 12-18"

Size In Tables: NA

Color: Violet

Bloom Time: Summer

Exposure: Full Sun to Shade

Water Usage: Medium

Hardiness Zone: all areas

Cold Hardiness: no



Periwinkle

Vinca major

Fast Growing

Not Native

Tags:      

Regions: (B) (C) (D) (E) (F) (G) (H) [Show Region Map](#)

A fast evergreen trailing vine that forms a dense ground cover. Use in the most inhospitable of spots in your yard, where other less aggressive ground covers have failed. The quarter-sized flowers are a soft blue and appear in late spring. Excellent for covering large sloped areas. Avoid planting with other small plants and flowers as it will overrun its neighbors.

Section: GroundCover

Type: Evergreen

Uses: Ground cover

Average size in the landscape: ALS-8-12*T x 3-4*W

Average height: 8-12"

Size In Tables: NA

Color: Blue

Bloom Time: Spring

Exposure: Partial Shade to Shade

Water Usage: Medium

Hardiness Zone: all but A

Cold Hardiness: no



Dwarf Palmetto

Sabal minor

Cold Hardy

Native

Tags:     

Regions: (A) (B) (C) (D) (E) (F) (G) (H) [Show Region Map](#)

Low growing tough cold hardy evergreen palm that is native to Texas. Beautiful dark green fan-shaped leaves. Perfect accent plant for damp shaded areas. Plant in groups. Very drought tolerant once established.

Section: Palms

Type: Evergreen

Average size in the landscape: ALS-4-5'T x 4-5'W

Average height: 4-5'T

Size In Tables: Small

Color: White

Bloom Time: Spring

Exposure: Full Sun to Shade

Water Usage: Medium

Hardiness Zone: all but northern A

Cold Hardiness: no



Texas Gold Columbine

Aquilegia chrysantha var. hinkleyana 'Texas Gold'

Attracts Hummingbirds

Native

Tags:      

Regions: (A) (B) (C) (D) (E) (F) (G) [Show Region Map](#)

Native to the Big Bend area of the state. Large, bright yellow flowers bloom in late spring. Able to tolerate hot weather in filtered shade. Excellent choice in the perennial garden as it is long-lived and re-seeds freely. A spectacular shade-blooming perennial. Can be annual in far north Texas. A Texas Superstar variety.

Section: Perennials

Average size in the landscape: ALS-2'T x 2'W

Average height: 2'

Size In Tables: NA

Color: Yellow

Bloom Time: Spring

Exposure: Partial Shade to Shade

Water Usage: Medium

Hardiness Zone: all but H

Cold Hardiness: no



Chinese Ground Orchid

Bletilla striata

Cut Flowers

Not Native

Tags:    

Regions: (E) (F) (G) [Show Region Map](#)

Tiny, lavender-like flowers appear in spring on these true terrestrial orchids. Good cut flower. Best suited for shaded or partially sunny areas with a rich moist soil. Protect roots from cold with a thick layer of mulch in the wintertime. Treat as an annual in far north and west Texas.

Section: Perennials

Average size in the landscape: ALS-18-24"T x 12-18"W

Average height: 18-24"

Size In Tables: NA

Color: Lavender

Bloom Time: Spring

Exposure: Partial Shade to Shade

Water Usage: Medium

Hardiness Zone: E,F, southern G

Cold Hardiness: no



3D SKETCHES



3D SKETCHES